



Reaching new levels

Terrestrial and mobile laser scanning with Z+F – Products and Applications

Rebecca Pfeifer



Innovation since 1963

- more than 30 years of experience in laser scanning -

1

Subsidiary

Z+F USA

40

Export Countries

Global distribution
network

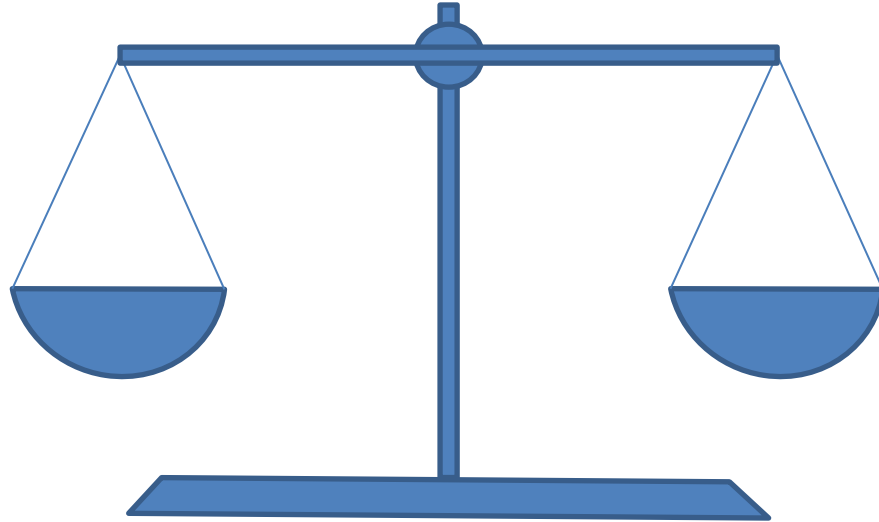
280

Employees

Use case



Speed
Mobile Scanning



Accuracy
Static Scanning

Speed-accuracy-Trade off

Mobile Mapping



Mobile Mapping – 2D Laser Scanner

Z+F PROFILER[®] 9020C

- **Flexible Integration** into different MMS
- **Integrated cameras** for colorization
- **IP 66** Protection Class
- **Compact design** to minimize parallax error
- Fully **pre-calibrated** system



Z+F PROFILER® 9020C – Data Examples



Z+F PROFILER® 9020C – Data Examples



Z+F IMAGER® 5016 (A)



Static Scanner – 3D Laser Scanner



Z+F Imager[®] 5016A

- **High-precision** terrestrial laser scanner
- Up to **365m** (Ambiguity Range)
- **2.2 million points/s**
- **7.5 kg**
- **Integrated HDR-camera** for colorization
- Absolute parallax free



HDR Technology



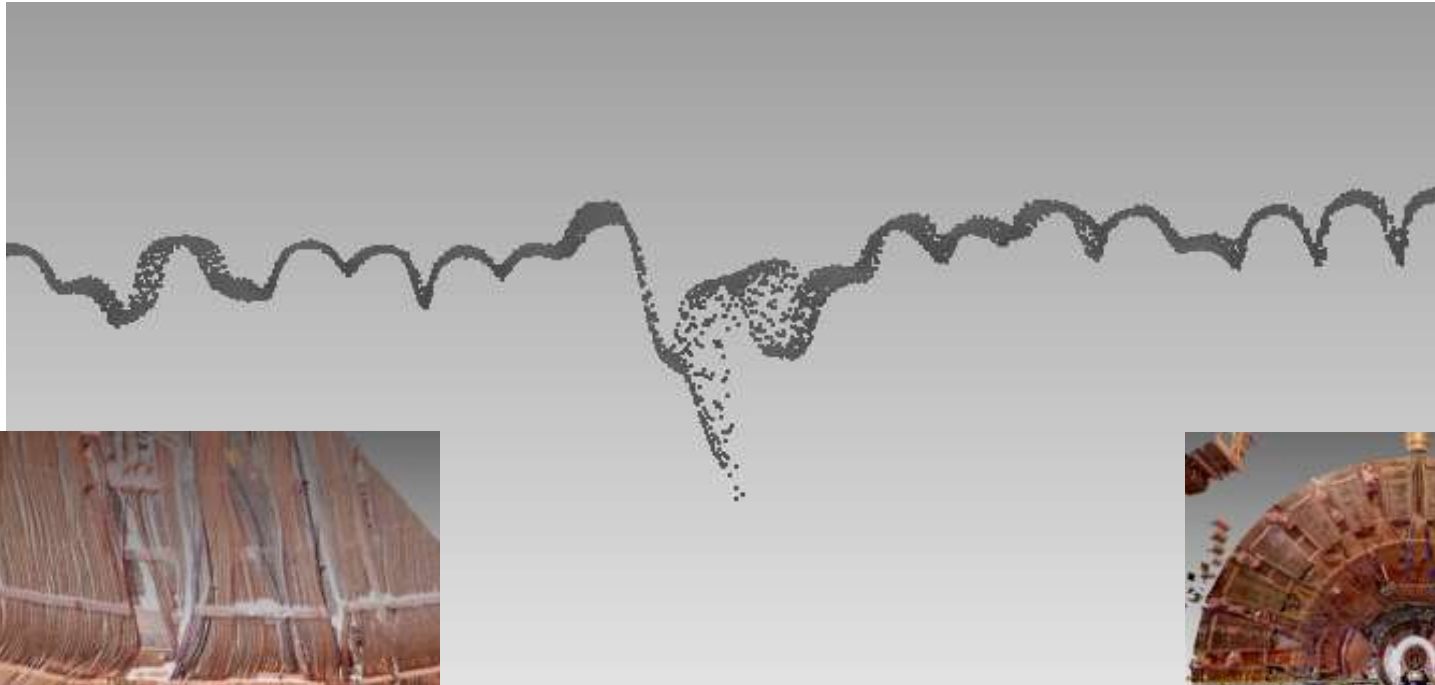
3D-point cloud – Delphi-Detector at CERN Switzerland/France



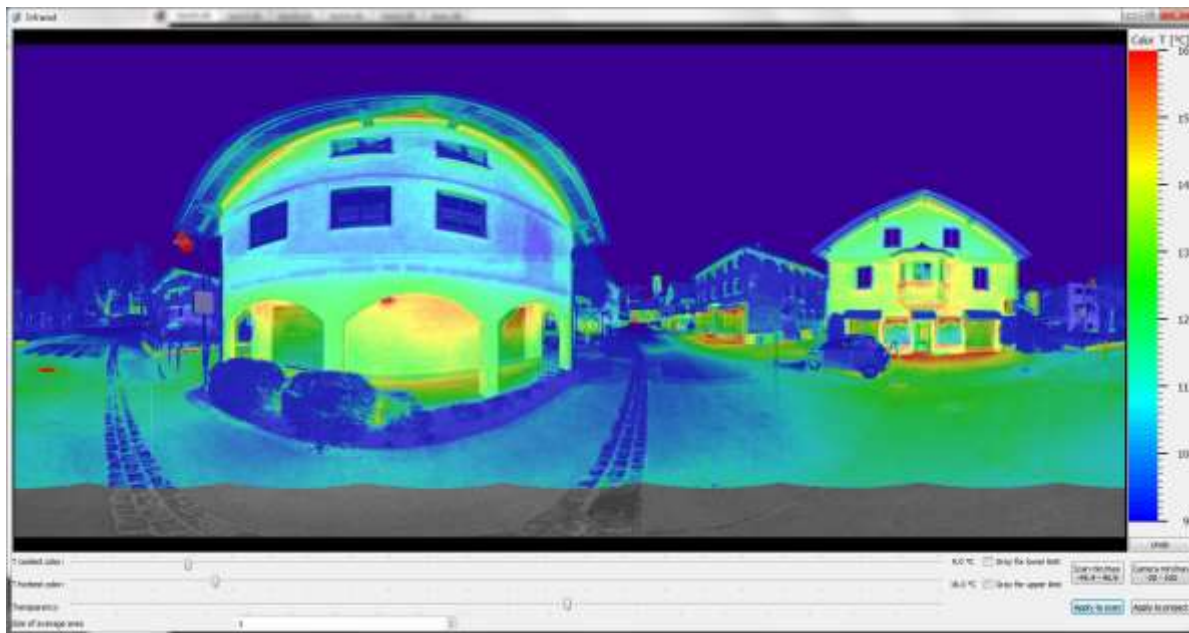
3D-point cloud – Delphi-Detector at CERN Switzerland/France



3D-point cloud – Delphi-Detector at CERN Switzerland/France



Thermography



3D Static Systems



Z+F IMAGER[®] 5016 series

2D Mobile Systems (MMS)



Z+F PROFILER[®] 9020 series

Static & MMS

3D
Static Systems



Z+F IMAGER® 5016 series



Z+F FlexScan®

SMMS



2D
Mobile Systems (MMS)



Z+F PROFILER® 9020 series



Using the IMAGER 5016 with:

- High quality data and low range noise
- 500.000 pts/s currently
- 55 profiles/s
- Full range of Z+F IMAGER® (365 m)

Mobilize your scanner!



Using the IMAGER 5016 with our
unique SLAM platform

- The **Z+F FlexScan® 22**

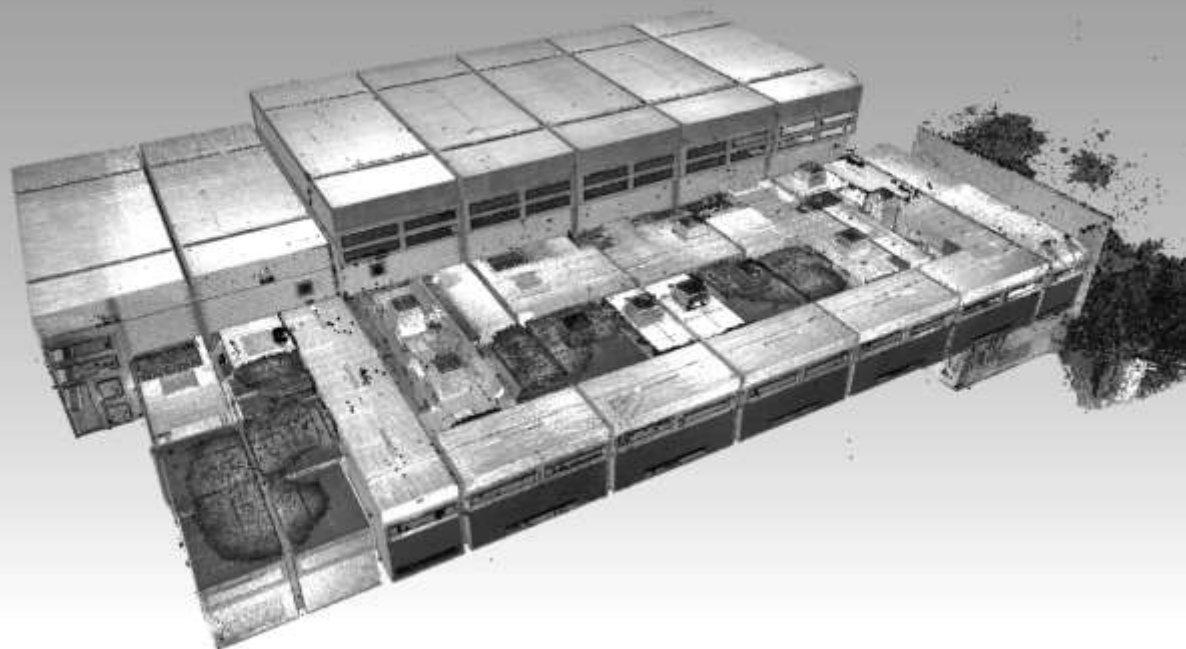
for accurate mobile data collection!

Universal 5-in-1 solution

- Universal Mounting – mount your scanner on a mobile base or robots
- Backpack mounting – for full flexibility
- Static scan – use the Z+F IMAGER also for stationary scans
- Color system
- Indoor and outdoor solution



Close Up



Example Dataset
School Gym

Close Up

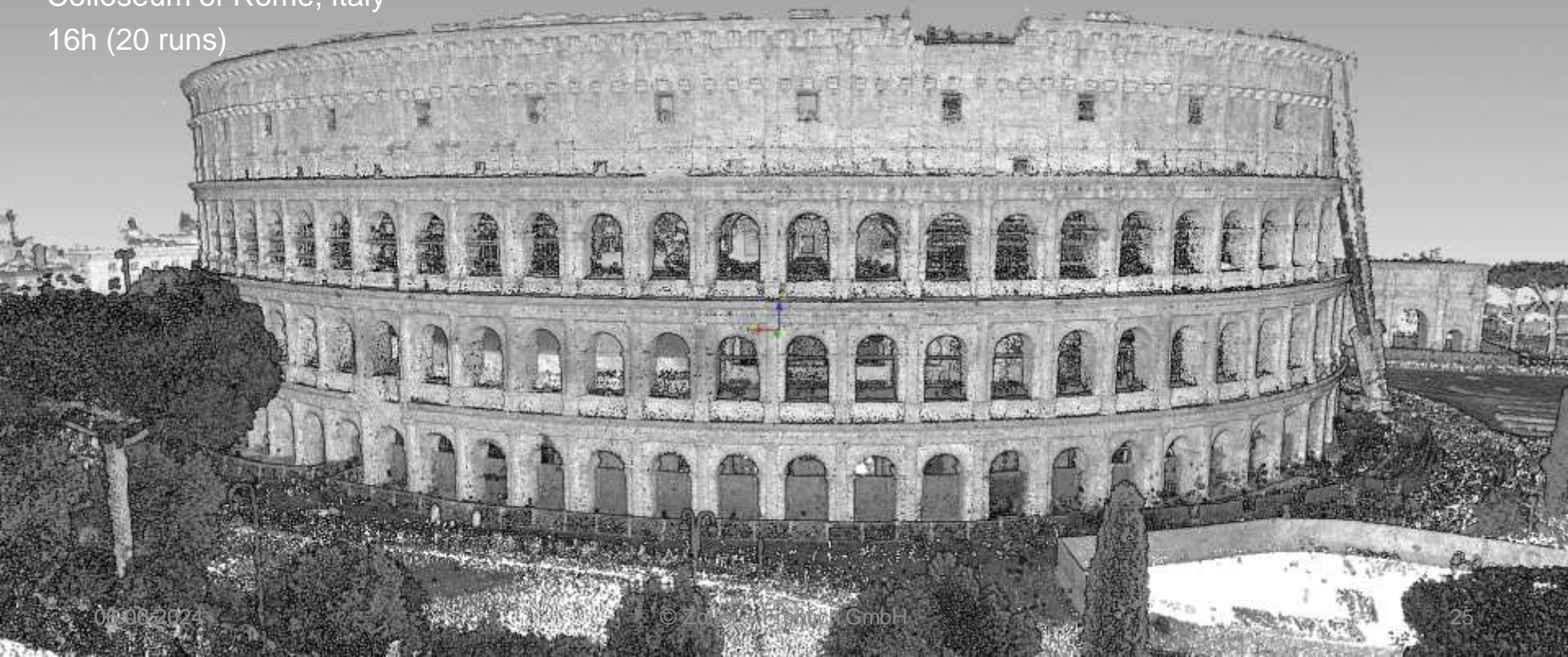


Pipework

Close Up

Colosseum of Rome, Italy

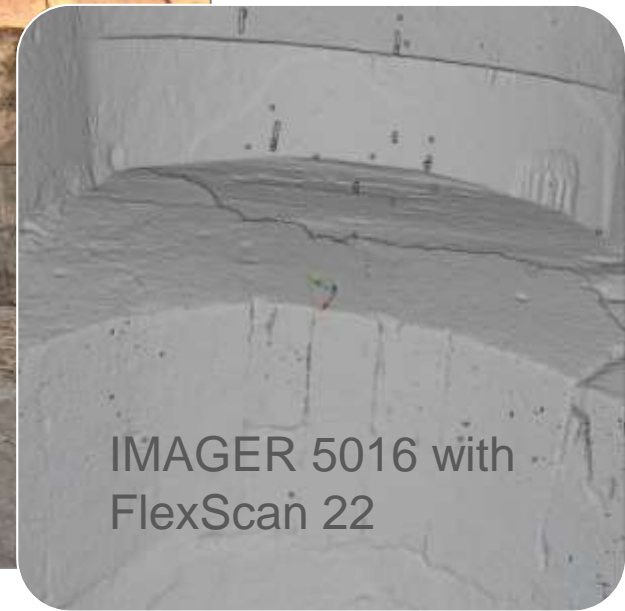
16h (20 runs)





IMAGER 5016
stationary

06.06.2024



IMAGER 5016 with
FlexScan 22

IMAGER
5015

0

Thank you for your attention



Zoller + Fröhlich GmbH
Simoniusstraße 22
88239 Wangen im Allgäu
Germany

Phone: +49 (0) 7522 9308-0
Fax: +49 (0) 7522 9308-252
www.zofre.de | www.zf-laser.com
info@zofre.de | info@zf-laser.com