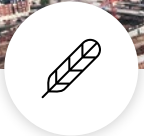
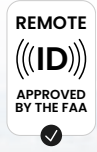


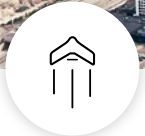


# eBee TAC™

Public Safety



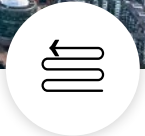
Light weight  
3.5 lbs



Deployment in  
3 minutes



Up to 90 minutes  
flight time



Up to 1,235 ac  
coverage at 400 ft



2D, 3D and thermal  
mapping

## High-accuracy first responders mapping solution

Lightweight fixed-wing drones such as the Blue UAS approved eBee TAC Public Safety have proven capabilities that enable law enforcement, firefighters and emergency services teams to rapidly deploy from a safe distance, capture the scene and make informed decisions on coordinating resources.



Search and rescue



Firefighting and land management



Disaster response



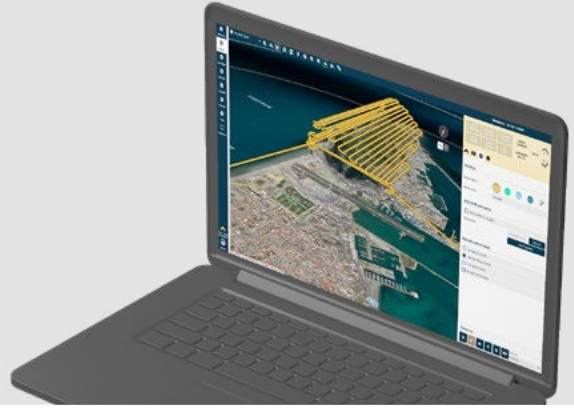
Perimeter surveillance

With its swappable sensor suite, eBee TAC Public Safety allows you to collect data that can be immediately used via the SD card for analysis and decision making.

## eMotion flight planning software

Easy to use desktop ground station to intuitively plan your missions, interact with your drones during the flight and prepare the data for post-processing.

- Offline flight planning
- 3D flight planning
- Multidrone capable
- Optimized mission blocks



Fully operational solution with the capability to integrate with situation awareness tools such as CivTAK

## Drone specifications

Wingspan	45.7 in / 116 cm
Material	Expanded Polypropylene (EPP)
Underbody skin	Curv® Polypropylene thermoplastic composite
Max. take-off weight	3.5 lbs / 1.6 kg
Transport case dimension	29.5x20x13 in / 75x51x33 cm
Motor	Low-noise, brushless, electric
Detachable wing	Yes
Radio link range	1.9 mi (up to 5 mi) 3 km nominal (up to 8 km)
Frequency	2.400 - 2.4835 GHz
Data storage	On-board encrypted SD card



Validated as  
cyber-secure



Radio data link  
encryption AES-256



Encrypted  
SD card

## Flight performance

Cruise speed	11-30 m/s or 25-68 mph (40-110 km/h)
Max. wind resistance	Up to 12.8 m/s or 28.6 mph (46 km/h)
Landing type	Linear landing with Steep Landing technology (16.4 ft / 5 m accuracy in 35° angle cone)
Service temperature	5° to 104°F (-15° to 40°C) Working above 95 °F / 35°C requires to protect the drone from the sun while on the ground
Humidity	Light rain resistance
Ground avoidance	Yes - LiDAR (range 394 ft / 120 m)
Ground resolution	Down to 0.6 in / 1.5 cm
Max. flight time	90 minutes
Mission coverage at 400 ft / 120 m	543 ac to 1,235 ac / 2,2 km² to 5 km²
Linear coverage	Up to 17.2 mi / 27.7 km out and back