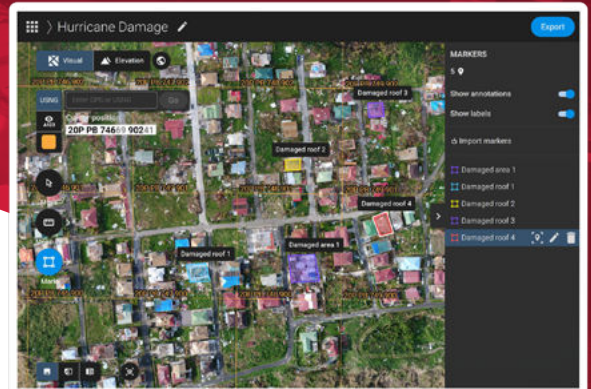




PIX4Dreact



2D fast-mapping software for emergency response and public safety

Reliable situational awareness in complex situations to make better and faster decisions



Fast

Pix4Dreact creates 2D maps from aerial imagery in minutes. Because when every second counts, up-to-date and reliable information is of utmost importance to teams on the ground.



Easy to use

Simple and intuitive to use, even in complex and stressful situations. Pix4Dreact is developed with public safety and humanitarian aid professionals to meet their unique challenges.



Lightweight and robust

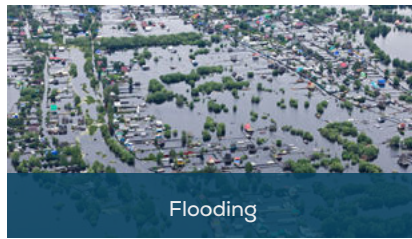
Lightweight enough to work on a mid-range laptop in the field. Pix4Dreact doesn't rely on an internet connection or the cloud for processing.

Applications

The map you need when you need it



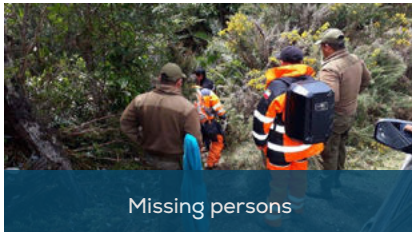
Earthquakes



Flooding



Fires



Missing persons



Tactical planning



Human displacement

	Features	Advantages
INPUTS	RGB images	Import a large number of nadir images from standard RGB sensors in JPG format
	Pre-processed maps	Import orthomosaics already processed in other Pix4D products (import as geoTIFF)
	Markers	Import markers/annotations that have been generated with other apps or import them from a shapefile and overlay them in your project (import as GeoJSON, shapefile and kml)
TOOLS & FUNCTIONALITIES	Easy to use interface	An easy to use and intuitive interface, developed with public safety and humanitarian aid professionals
	Fast mapping	Generate high-resolution up-to-date and reliable 2D maps from aerial imagery in minutes
	US National Grid	US National Grid map overlay with the ability to jump to a specific cell by either USNG code or GPS coordinates
	Marker tool	Place point, line, and area markers in different colors to identify and export points of interest
	Measure tool	Quickly measure distances and areas for accurate tactical and mission planning. Save as markers when needed to make the measurements permanent
	Comparison tool	Compare different maps side-by-side using split or double screen
	PDF report generator	Share your maps with all project stakeholders for seamless collaboration using the PDF report export tool
	Export tool	Select some or all layers in your project and export them into a predefined folder on your computer
	Lightweight and robust	Lightweight to work on a mid-range computer in the field. Pix4Dreact doesn't rely on an internet connection or the cloud for processing
OUTPUTS	Orthomosaic	An intuitive representation of the situation on the ground for smoother collaboration or long-term documentation
	Digital surface model	See elevation data to help with movement of personnel on the ground and estimate flooding prone areas (export as geoTIFF)
	Markers and measurements	Adding markers to areas of interest helps convey more valuable and actionable information (export as PDF, GeoJSON and shapefile)
	PDF report	Easily export a 2D orthomosaic, location data and markers in one file to share by WhatsApp or over email. Customize the PDF report with your own logo and contact details.

HARDWARE SPECS



CPU: Intel® Core™ i3 or AMD Phenom processor (or faster recommended)



HD: Approximately 4GB HDD free space



RAM: 4GB RAM (or 8GB recommended)



GPU: NVIDIA GeForce 2 GB RAM (or better recommended)



OS: Windows 10 macOS Catalina (10.15) or above

Try for free at pix4d.com/react