

# Single and Multibeam Hydrographic Survey

## TRIMBLE MARINE CONSTRUCTION SOFTWARE

Trimble® Marine Construction software provides reliable and efficient survey planning, data acquisition, editing, data processing and volume calculations. It offers the surveyor and helmsman a powerful tool to complete efficient marine surveys in both shallow and deep water.

### Workflow

The software offers single beam survey functionality as standard and multibeam acquisition as a separate license. Real time progress is shown in 2D and 3D views using a color-coded Digital Terrain Model (DTM). Multiple displays provide operator feedback and the vector editing module offers tools for data editing and cleaning. After data processing, grid models can be generated, interpolations completed, and data is available for volume calculations, processing, and export.

### Customizable interface

Multiple monitors with independent layouts can be tailored to the needs of the surveyor. The software can also show presentation screens in real time. A color-coded plan view and 3D view highlights high and low spots relative to the design.

### Setup wizards

Easy to configure set-up wizards, equipment templates and vessel shape (DXF) import make it easy to use.

### Layered data

The software can create simple track guidance lines, waypoints and routes, but it also lets the surveyor build additional information layers to the lan view navigation such as a surveyed grid model, electronic navigation chart, sonar image wedge layer.

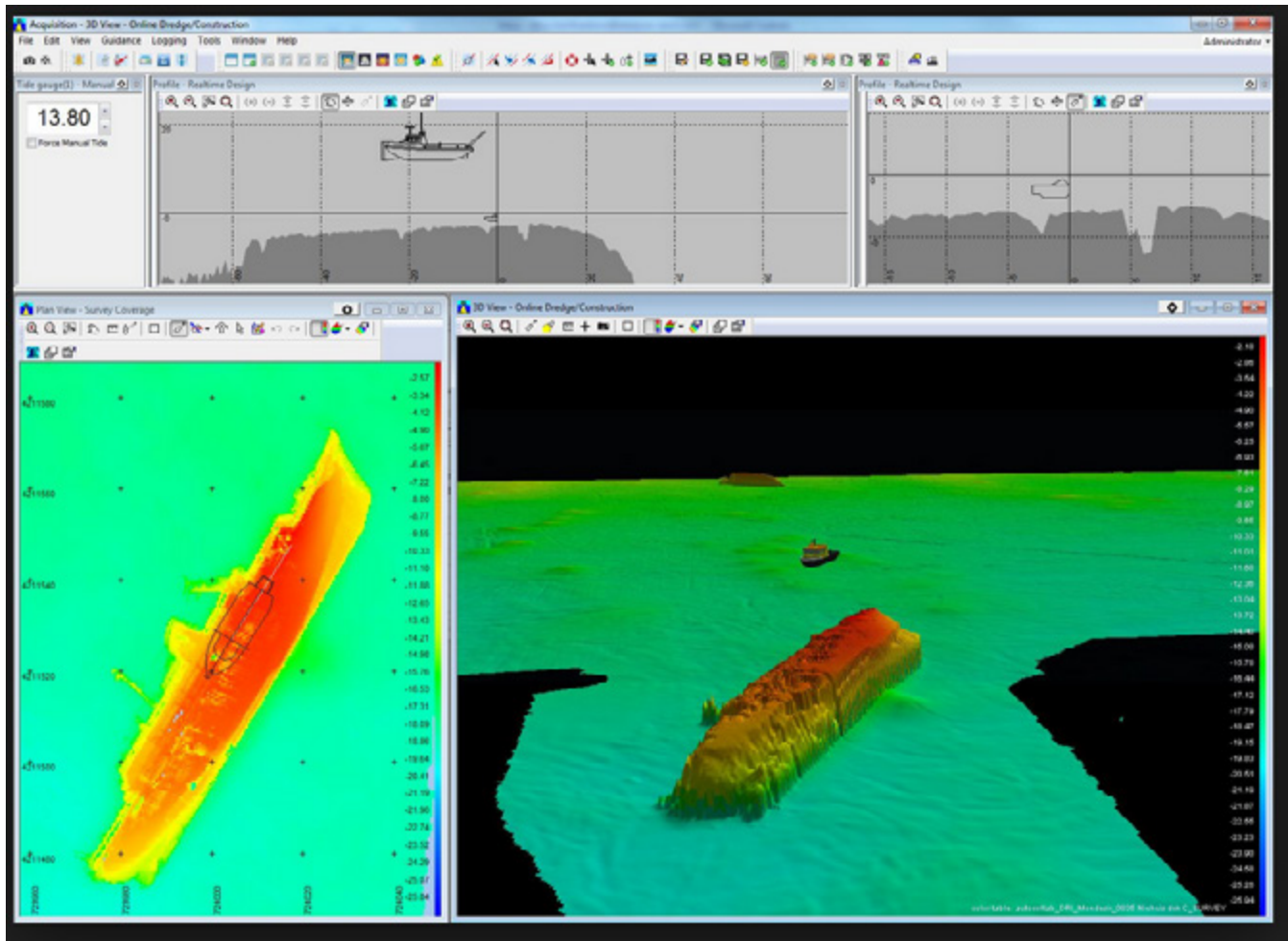
Trimble Marine Construction software can also load IHO standard S-57 electronic navigation chart as a background layer. Note: S-57 chart layer is for reference purpose only. Use an approved Electronic Chart and display Information system (ECDIS) for safe navigation.

## Features

- ▶ Complete software suite for efficient acquisition and processing
- ▶ Efficient and accurate surveying
- ▶ Able to manage large data sets
- ▶ Single-beam interpolation for grid models
- ▶ Magnetometer data interpolation
- ▶ Volume computations from sailed lines or grid models
- ▶ Suitable for shallow and deep water applications
- ▶ Robust and reliable to maximize uptime
- ▶ Supports Trimble inertial sensors for vessel or roll, pitch, heave determination



## TRIMBLE MARINE CONSTRUCTION SOFTWARE



Trimble Marine Construction software survey application - screen view

## About Trimble Marine

Trimble offers flexible, high-performance positioning systems to meet the unique needs of marine construction on both simple and complex projects. Solutions include both hardware and software, and can be easily integrated into third-party systems. The portfolio includes marine information systems, GNSS receivers, antennas, radios and inertial positioning systems.

Trimble Marine Construction software is transforming the way marine operations work by helping build and maintain the world's port, river, canal and other critical infrastructure. Trimble continues to transform this industry's work across the project lifecycle through sophisticated planning and design, advanced automation solutions, site positioning, and real-time connectivity.



[www.geometius.nl](http://www.geometius.nl)

**Geometius bv**

Operetteweg 4a

1323 VA Almere

The Netherlands

+3188 4366 300

[info@geometius.nl](mailto:info@geometius.nl)

**TRIMBLE CIVIL ENGINEERING AND CONSTRUCTION**

10368 Westmoor Drive

Westminster CO 80021 USA

800-361-1249 (Toll Free)

+1-937-245-5154 Phone

[marine@trimble.com](mailto:marine@trimble.com)