

Echologger echosounder

- Compact single frequency echosounder
- Connect to PC or data logger via USB port
- No external power source required
- Complete solution with the BathySurvey App for Trimble Access

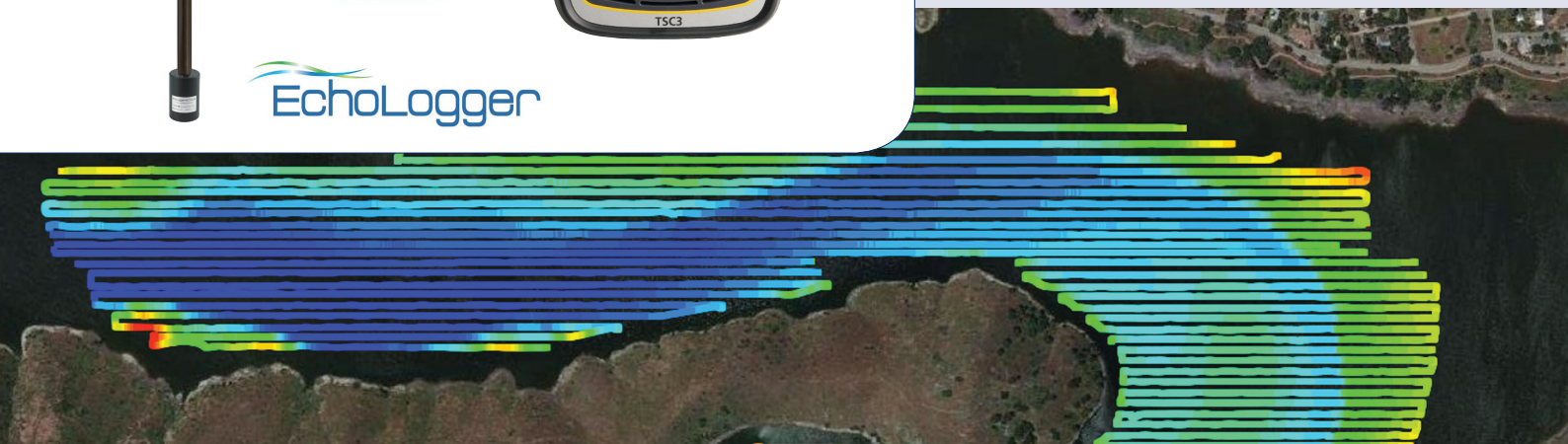


The echosounder can be used for various applications in marine environments. The **Echologger EU400** is ultra light, compact and ideal for installing on small boats in combination with a GNSS receiver.

It can be connected to your laptop, PC or data logger using the USB port. No need any more for an external power supply. A tilt sensor can be integrated as an option.

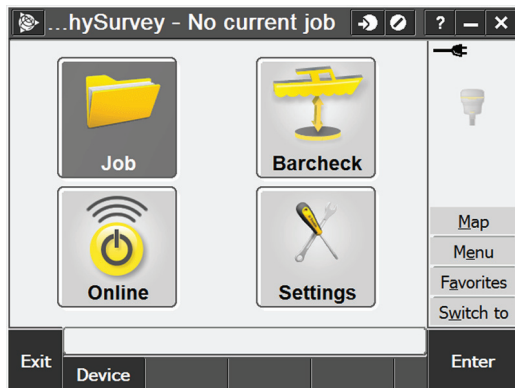
The user-friendly GUI software, Echologger Controller, enables users to set up parameters and to monitor backscatter data along the full water column.

Connect the Echologger to your Trimble TSC3 or Trimble Tablet and create a complete solution for hydrographic measurements with the Trimble Access BathySurvey App.

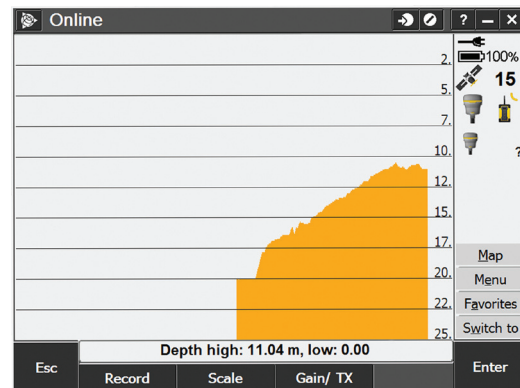


BATHYSURVEY APP

The online workflow of the BathySurvey App does not only append the measured depth to a position but also visualizes the data in a real-time graph to monitor the current water depth. It provides fast and precise information of the seafloor. Scale, units and echosounder parameters are configurable for real-time visualization.



The Barcheck Wizard guides the user through a workflow to determine the speed of sound of an acoustic signal in the water. This increases the accuracy of the measurement. The collected data can be exported via a style sheet to a comma separated ASCII file.



SPECIFICATIONS ECHOLOGGER

Acoustic Frequency	450 KHz	Tilt sensor integrated (optional)	
Beam width	5° Conical (-3dB)	Dual-axis, horizontal operation	±90°
Transmit Pulse Width	10µsec ~ 200µsec (10µsec step)	Inclination data accuracy	0.1
Ranges	0.15 m ~ 100 m	Digital Output Interface	USB
Housing	Acetal	Communication Speed	4800 ~ 115200 baud (115200 baud default)
Connector	USB	Data Output Format	ASCII TXT, NMEA0183, or user defined (optional)
Operating Depth	5 m (Cable length dependant)	Configuration and Data reading	Echologger Control Program or any terminal program
Repetition (Ping) Rate	10 Hz max	Operation Temperature	-10°C ~ +50°C
Sampling Rate	100 kHz	Power supply	USB powered, 2W max
Water Column Resolution	>7.5 mm	Dimensions	D56 mm x L80 mm (without connector)
Altimeter Range Resolution	<1.0 mm	Weight	420g
Temperature Resolution	0.1°C	Other features	Hypack Compatible (NMEA)
Temperature Accuracy	0.5°C (-10°C ~ +50°C)		GPS integrated data

